

# 1394-6F-6F-V1A

## 1. Description:

1394-6F-6F-V1A is a simple 6pin FireWire 400 Female to Female pass-through adapter breakout board. It brings all 6 pins of two 6-conductor 1394 FireWire 400 Female connectors to screw terminal blocks and headers for easy testing, prototyping and breadboard connection. All 6 pins of a Female connector directly connect to another Female connector. User can also use the two 6 pins headers on both sides of the breakout board to connect to breadboard or prototype PCB.

## 2. Features:

- All 6 pins of two 6-conductor FireWire 400 1394 Female connectors brought out to headers and screw terminal blocks
- All 6 pins of a 6pin FireWire 400 Female connector directly connect to another 6pin FireWire 400 Female connector.
- Various connecting method chosen by users.
- 4 mounting holes with 2mm diameter hole size
- 1.00"(25.4mm)X1.18"(30mm) board dimensions

## 3. Parts:

- 1) 1pc X 1394-6F-6F-V1A PCB
- 2) 2pc X 6pin FireWire 400 Female Connector
- 3) 1pc X 6pin 0.1"(2.54mm) spacing terminal block
- 4) 2pc X 12pin 0.1"(2.54mm) header

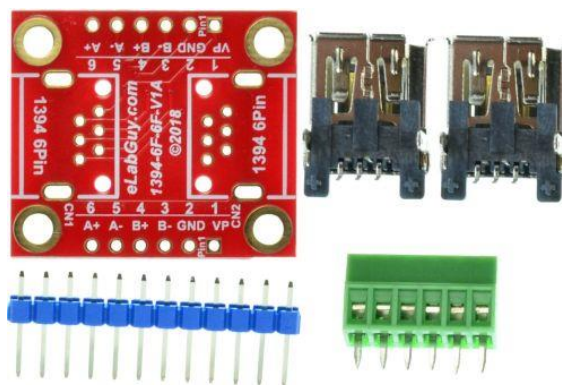
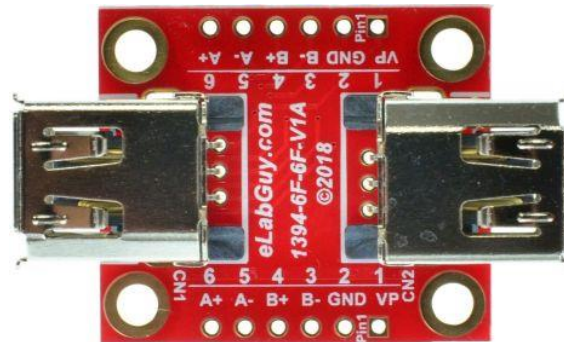


Figure 1: Parts inside the kit  
(Note: the module is not assembled, user can decide which connector to use on the module.)

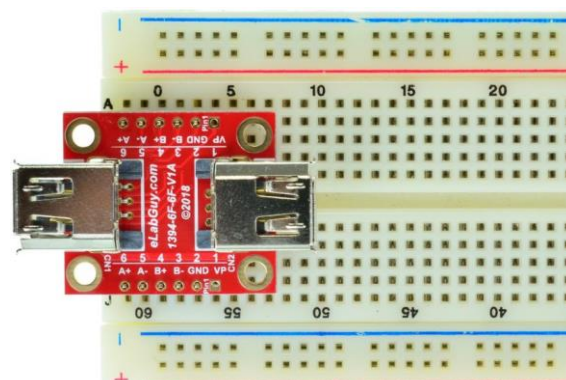


Figure 2: Example of connecting the 1394-6F-6F-V1A on a proto PCB (Note: This picture only shows the pins spacing, actual use may not be used on a breadboard)

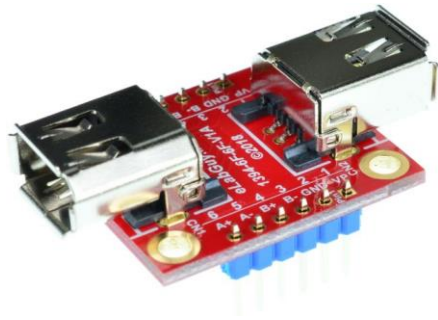


Figure 3: 1394-6F-6F-V1A with headers

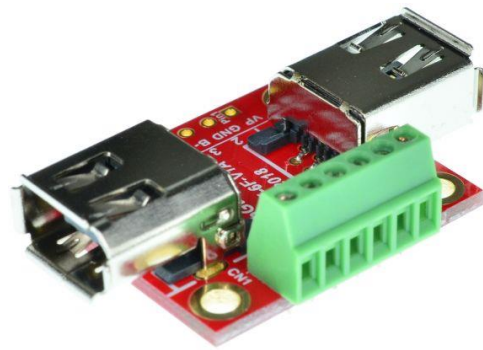


Figure 4: 1394-6F-6F-V1A with terminal blocks

## Related products from eLabGuy:



1394-6F-BO-V1A



1394-9F-BO-V1A



1394-4F-BO-V1A



1394-6F-6F-V1A



1394-9F-9F-V1A