

LEDSW-BO-V1A

1. Description:

LEDSW-BO-V1A is a simple Blue color LED tactile switch breakout board. It brings all 4 pins of a Blue color LED switch to screw terminal blocks or headers for easy testing, prototyping and breadboard connection. For breadboard connections, user can use the 4pin header on the bottom for sideways connection. User can also use the two 4pin headers on both sides of the breakout board to connect to the front end of the breadboard for a steady connection.

2. Features:

- All 4 pins of Blue color LED switch brought out to headers or screw terminal blocks
- Various connecting method chosen by users.
- 2 mounting holes with 3mm diameter hole size
- 0.8"(20.32mm)X0.6"(15.24mm) board dimensions

3. Parts:

- 1) 1pc X LEDSW-BO-V1A PCB
- 2) 1pc X Blue color LED tactile switch
- 3) 1pc X 4pin 0.1"(2.54mm) spacing terminal block
- 4) 1pc X 8pin 0.1"(2.54mm) header
- 5) 1pc X 8pin right angle 0.1"(2.54mm) header

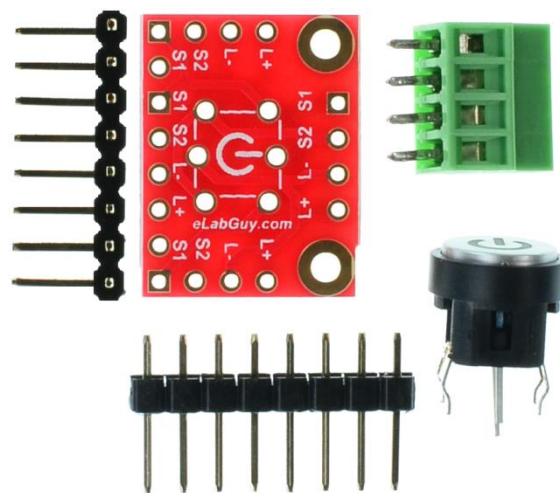
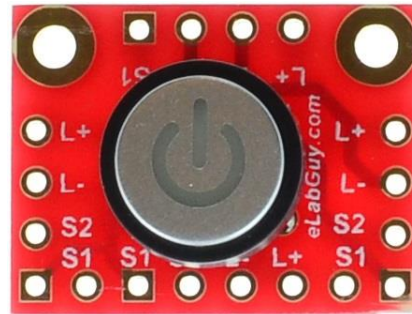


Figure 1: Parts inside the kit
(Note: the module is not assembled, user can decide which connector to use on the module.)

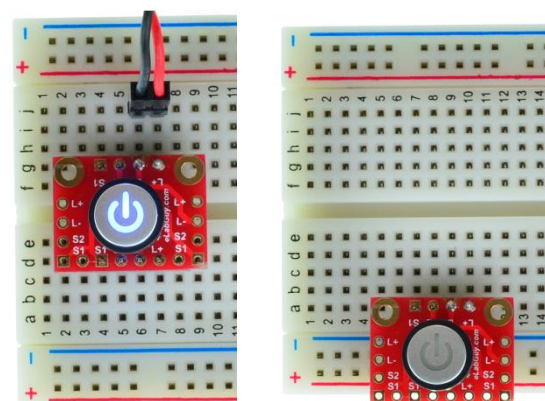


Figure 2: Example of connecting the LEDSW-BO-V1A stably on a breadboard



Figure 3: LEDSW-BO-V1A with headers

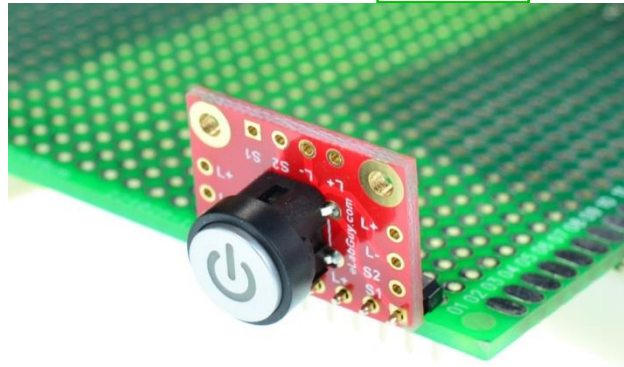
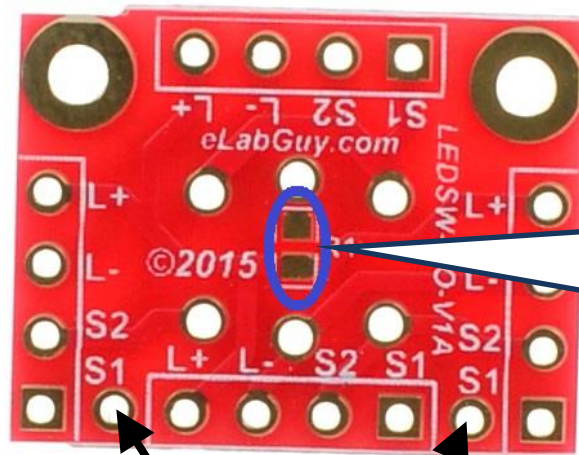


Figure 4: Solder on prototype PCB with right angle headers



Optional 0603 resistor pad across L+ to LED positive pin Or short it if you want to use an external resistor.

Note: This Two holes only used to support the right angle header and have no connection with any pins.