

USB3.1-CF-BO-V3A

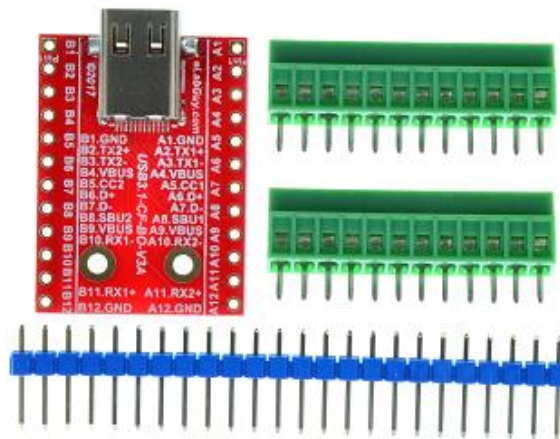
1. Description:

USB3.1-CF-BO-V3A is a simple USB3.1 Type C Female socket breakout board. It brings all 24 pins of a USB3.1 Type C Female connector to screw terminal blocks and headers for easy testing, prototyping and breadboard connection. For breadboard connections, user can use the two 12pin headers on both sides of the breakout board to connect to the front end of the breadboard for a steady connection.



2. Features:

- All 24 pins of a USB3.1 Type C Female connector brought out to headers and screw terminal blocks
- Various connecting method chosen by users.
- 0.9"(22.86mm)X1.6"(30.48mm) board dimensions



3. Parts:

- 1) 1pc X **USB3.1-CF-BO-V3A PCB**
- 2) 1pc X **USB3.1 Type C Female Connector**
- 3) 2pc X 12pin 0.1"(2.54mm) spacing terminal block
- 4) 1pc X 24pin 0.1"(2.54mm) header

Figure 1: Parts inside the kit

(Note: the module is not assembled, user can decide which connector to use on the module.)

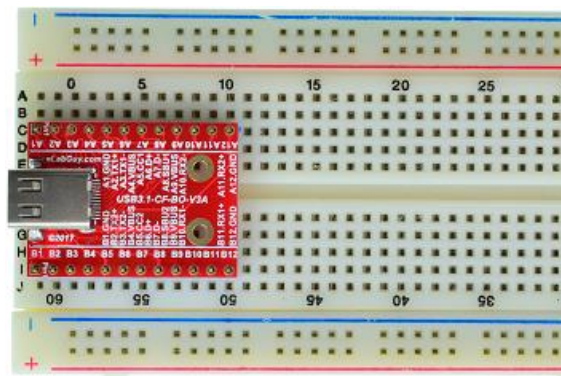


Figure 2: Example of connecting the USB3.1-CF-BO-V3A on a breadboard



Figure 3: USB3.1-CF-BO-V3A with headers



Figure 4: USB3.1-CF-BO-V3A with terminal blocks

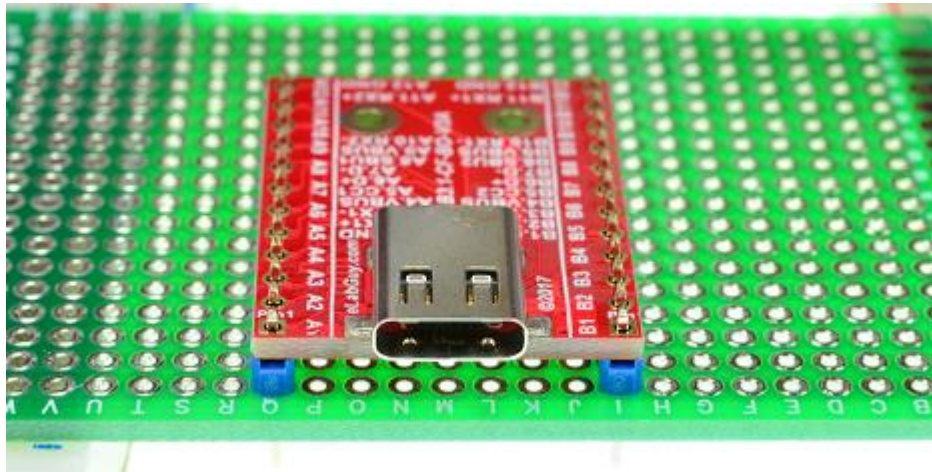
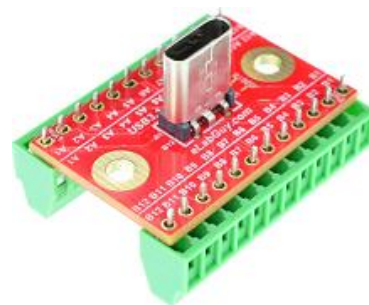


Figure 5: Solid Mounting on prototype PCB

Related products from eLabGuy:



USB3.1-CF-BO-V2AS



USB3.1-CF-BO-V1AV